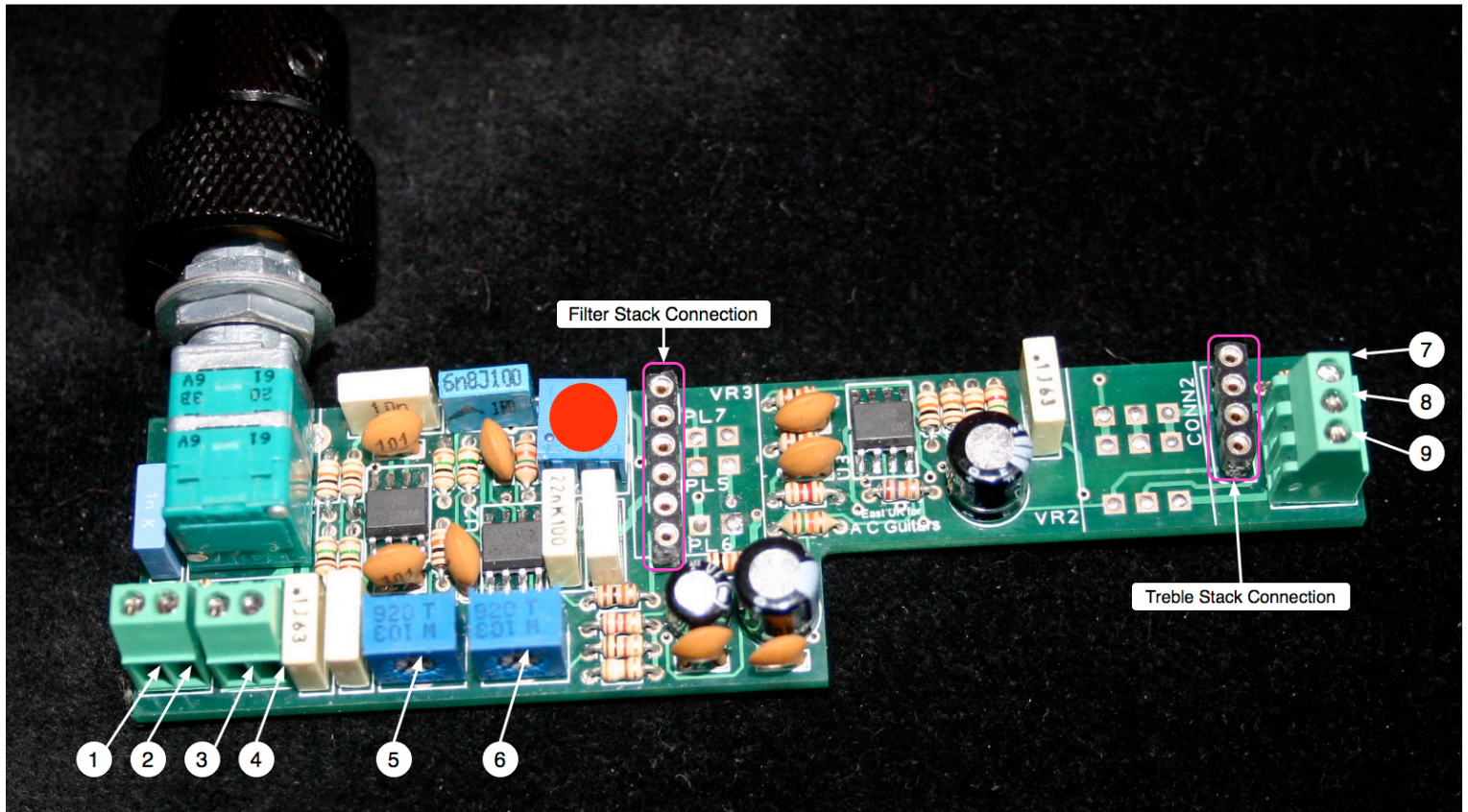


# ACG EQ-02

Pre-amp installation instructions.

The ACG pre-amp does not require any soldering all connections are made using screw terminals.

Wiring key for the main board.



This board is common to all configurations. Filter stack connection is now duplicated on the reverse of the board.

1. Cold (-) input for neck pickup. **Note:** Use this Input for the Single Pickup version
2. Hot (+) input for neck pickup. **Note:** Use this Input for the Single Pickup version
3. Cold (-) input for bridge pickup. (N/A for Single Pickup version)
4. Hot (+) input for bridge pickup. (N/A for Single Pickup version)
5. Gain control for neck pickup.(0-+12dB ) **Note:** Use this Gain Control for the Single Pickup version
6. Gain control for bridge pickup. (0-+12dB) (N/A for Single Pickup version)
7. Positive connection for battery clip. (red wire)
8. Output to jack socket. (Orange wire tip on jack socket)
9. Ground (green wire ground on jack socket)

# ACG EQ-02

Pre-amp installation instructions.

Passive tone wiring.

The passive tone is wired directly into the pickup inputs via a 3 wire ribbon cable.

The centre wire is connected in to a Cold input ( 3 ) the outer wires are connected to the hot inputs. (2 & 4 )

**The other internal control (marked in red) is NOT USER ADJUSTABLE and under no circumstances should it be moved. This will void your warranty and ACG will be in no way responsible for any consequential damaged caused if the user adjusts this pot.**

- Important: Make sure all threaded bushes for the pots are solidly grounded via screening or other highly conductive material.( Although conductive paint is fine for screening it should not be used as a method for grounding the pots of the pre-amp).
- The additional black wire should be attached to the cavity ground.
- The flexi-strips used to connect some of the pots while designed to be formed and bendable,try to keep this to a minimum.
- Pre-amp will work on 9 volt or 18 volt power supply.